

BY THE NUMBERS

THE MISSISSIPPI: MINNESOTA'S LINK TO THE WORLD

The history of the Mississippi River is defined by twists and turns of geology, weather and, eventually, human involvement. An awe-inspiring natural feature that defines Minnesota's landscape. And for the better part of 150 years, modern industries depend on the great river as a highway of transporting goods.

In partnership with the Saint Paul Port Authority, *Current State of Our Working River* takes you inside the Mississippi River's story as a transportation waterway that connects Minnesota with the world.

THE SAINT PAUL HARBOR

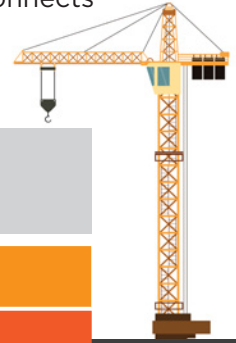
2+ miles of unloading area

4 river terminals

30 businesses

774 jobs

5 MILLION TONS of goods pass through the Saint Paul Port Authority **EVERY YEAR**

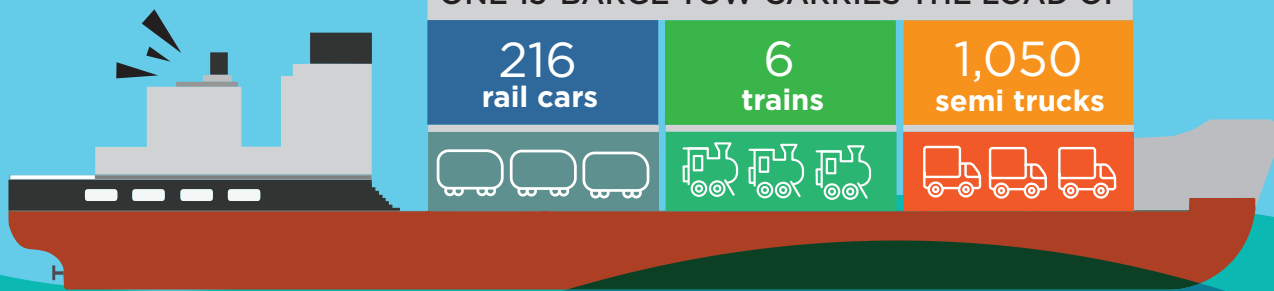


ONE 15-BARGE TOW CARRIES THE LOAD OF

216
rail cars

6
trains

1,050
semi trucks



the Mississippi has **12,000 MILES** of commercially navigable channels...
...and allows goods to reach **38** states!

PER ONE TON OF CARGO

Trucks = 150 MPG

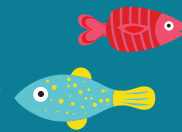
Trains = 478 MPG

Barges = 616 MPG



The Mississippi transports **60%** of MN's agricultural exports.

moving cargo via waterways reduces **51 MILLION** truck trips per year



Sources: Saint Paul Port Authority: sppa.com/harbor-management/st-paul-shipping-stats

Waterways: Working for America, National Waterways Foundation, 2012

A Strong Inland Waterways System Delivers a Stronger American Economy, National Waterways Foundation, 2017